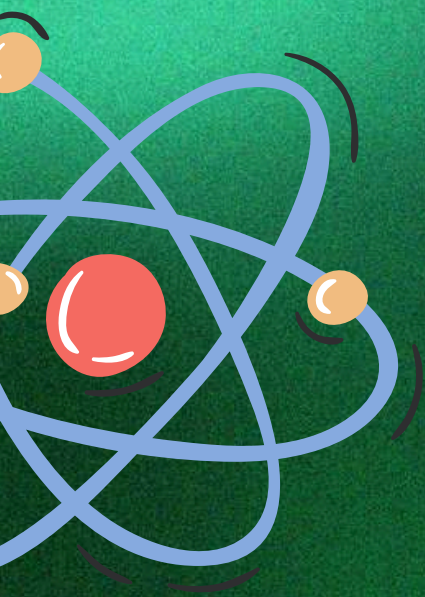


Los Baños Science Community Foundation, Inc.

OUTSTANDING R&D AWARDS

Syem Sayra 2026



Guidelines

Background

The Los Baños Science Community (LBSC) is one of four science communities established by the Department of Science and Technology in accordance with Presidential Executive Order No. 784 in 1984. The science community concept fosters the spirit of sharing of resources and expertise among research agencies located in Los Baños. On March 23, 2001 the Los Baños Science Community embarked on strengthening its resource generation activities, which prompted its registration with the Securities and Exchange Commission making the entity a nonstock foundation.

Agencies belonging to the Los Baños Science Community Foundation, Inc. (LBSCFI) have, through the years, accumulated a rich resource of research and development information, which may have great national impact. The LBSCFI feels that the SyenSaya, which is celebrated annually, is an appropriate occasion to grant the awards for outstanding research and development conducted by scientists and development workers in the community. The award was launched in 1986. The LBSCFI Outstanding Research and Development Awards, launched in 1986, give due recognition in the form of cash and plaque of recognition to excellent research and development projects conducted in the community in support of national development.

General Guidelines

1. The title of the award is “LBSCFI Outstanding Research and Development Awards” with the following categories:

PARRFI Research and Development Awards (Agriculture, Forestry, and Environment)

1. Research Category
2. Development Category

F. S. Pollisco Award

2. The research/development projects must be conducted by scientists or development workers from the Los Baños Science Community and their collaborators **within the Philippines** including graduate (MS and PhD) theses of staff from LBSCFI memberagencies.

3. The awards will be conferred to **either an individual or a group**. For graduate (MS and PhD) theses, the award will be given to the student and the adviser(s). The paper must be authored by **at least one Filipino citizen**.

4. The research/development projects should be **relevant to the thrusts of the government programs in agriculture, aquatic and natural resources**.

5. The research/development projects should have been **completed within the last three years (2022—2024)**, either published or unpublished. Research/development projects that have received award(s) from any national/international award-giving body are still eligible.



Specific Guidelines

- Entries should be submitted in publishable form following the general format of leading journals in the discipline/sector.
- Development entries should be supported by appropriate documentation, (e.g. diagnostic kit, vaccines).
- The head of any LBSCFI member-agencies should make nominations for the awards to the LBSCFI R&D Awards Committee c/o PCAARRD.
- Entries should be submitted together with the prescribed nomination form. The entries should include:
 1. Six (6) copies of the summary (not less than three pages, but not more than five pages, double spaced, not below 10-point font).
 2. Six (6) copies of the full text (not more than 10 pages, excluding the appendices, double spaced, not below 10-point font)
- The researcher(s) should indicate if the project has IPR issue. Entries should be received at PCAARRD by the Chair, LBSCFI R&D Award Committee, not later than **October 15, 2025**.
- Entries will be evaluated using the criteria set by the LBSCFI R&D Awards Committee.
- A 3-minute video presentation of the papers/entries before the panel of evaluators is required. Nominees will be notified on the schedule and guidelines of the video presentation.
- The LBSCFI R&D Awards Committee should submit its recommendation to the LBSCFI Steering Committee for confirmation.
- The winning paper will be presented during the LBSCFI Syensaya Awards and Closing Ceremony.
- Also, during the Syensaya Awards and Closing Ceremony, the award(s) will be given to the awardees and acknowledged them through inclusion of their names and the highlights of their work in the program for distribution during the celebration.
- A cash prize of P20,000.00 and a plaque of recognition of the paper will be given to each winning entry.
- In addition to conferring the award to the winner during the ceremony, in his/her absence, the awardee should write to LBSCFI to be read during the ceremony as acknowledgement.



Criteria

PARRFI: Research Category

I. Manuscript (80%)

A. Significance of Findings 40%

i. Contribution to new knowledge and S&T advancement

ii. Relevance to national/regional significance

B. Methodology 40%

i. Creativity, originality, and quality of work (30%)

a. Rationale/State-of-the-Art

b. Objectives

c. Conceptual/Analytical Framework/Methodology

ii. Clarity and style/Accuracy of figures and language (10%)

II. Presentation (10%)

i. Oral (Clarity and Style) 5%

ii. Video (Clarity and Style) 5%

III. Awards and Publications (10%)

i. Awards received 5%

a. International (full points)

b. Local (outside LBSCFI community)

ii. Publication 5%

a. ISI-published (full points)

b. Non-ISI published

Total 100%

PARRFI: Development Category

I. Manuscript (80%)

A. Outcome/Impact 40%

i. Social acceptability (in terms of numbers of adoptors)

ii. Technical feasibility

iii. Financial/Economic viability

iv. Environmental soundness

v. Political acceptability

B. Write-up 40%

i. Rationale/State-of-the-Art

ii. Objectives

iii. Conceptual/Analytical Framework/Methodology

II. Presentation (10%)

i. Oral (Clarity and Style) 5%

ii. Video (Clarity and Style) 5%

III. Awards and Publications (10%)

i. Awards received 5%

a. International (full points)

b. Local (outside LBSCFI community)

ii. Publication 5%

a. ISI-published (full points)

b. Non-ISI published

Total 100%



Criteria

F. S. Pollisco Award

I. Manuscript (80%)

A. Significance of Findings 40%

- i. Contribution to the development of an effective model/paradigm for integrated R&D in forestry and natural resources
- ii. Relevance to national/regional significance

B. Methodology 40%

- i. Creativity, originality, and quality of work (30%)
 - a. Rationale/State-of-the-Art
 - b. Objectives
 - c. Conceptual/Analytical Framework/Methodology
- ii. Clarity and style/Accuracy of figures and language (10%)

II. Presentation (10%)

- i. Oral (Clarity and Style) 5%
- ii. Video (Clarity and Style) 5%

III. Awards and Publications (10%)

- i. Awards received 5%
 - a. International (full points)
 - b. Local (outside LBSCFI community)
- ii. Publication 5%
 - a. ISI-published (full points)
 - b. Non-ISI published

Total 100%

Kindly address your entries to:

Dr. Juanito T. Batalon, Chair, LBSCFI R&D Awards Committee and
Deputy Executive Director for R&D Philippine Council for Agriculture,
Aquatic and Natural Resources Research and Development
Paseo de Valmayor, Timugan, Economic Garden, Los Baños. Laguna
4030

For more information, please contact us at:



(049) 536-1582



RDAAwards@pcaarrd.dost.gov.ph



lbscfi.org



VIDEO PRESENTATION GUIDELINES FOR LBSCFI R&D AWARDS

1. Video footage and/or high-resolution photos
 - a. About the research/technology
 - b. How the technology works
 - c. People in action using the technology
 - d. The researcher(s) in action
2. Results/Impacts
3. Short description of the research/technology including benefits
4. Short information about the researcher(s)
5. Duration of the video **3 minutes only** (in normal speed)
6. Format:
 - a. If possible, make the file an executable file (e.g. .exe filename extension)
 - b. MP4 format
 - c. Any format that runs on VLC Media Player