

Project and Workshop Overview

Pedcris M. Orencio



**Workshop on Modeling Management of Climatic Stress in Rice-based Cropping Systems:
Application of the AgPractices&Domains Platform**

7-8 October 2021 | SEARCA SOLVE Platform

Agriculture and Growth

Average nominal GDP per capita of agricultural sector in SEA is USD4,755.00 (2019)

Agriculture and Employment

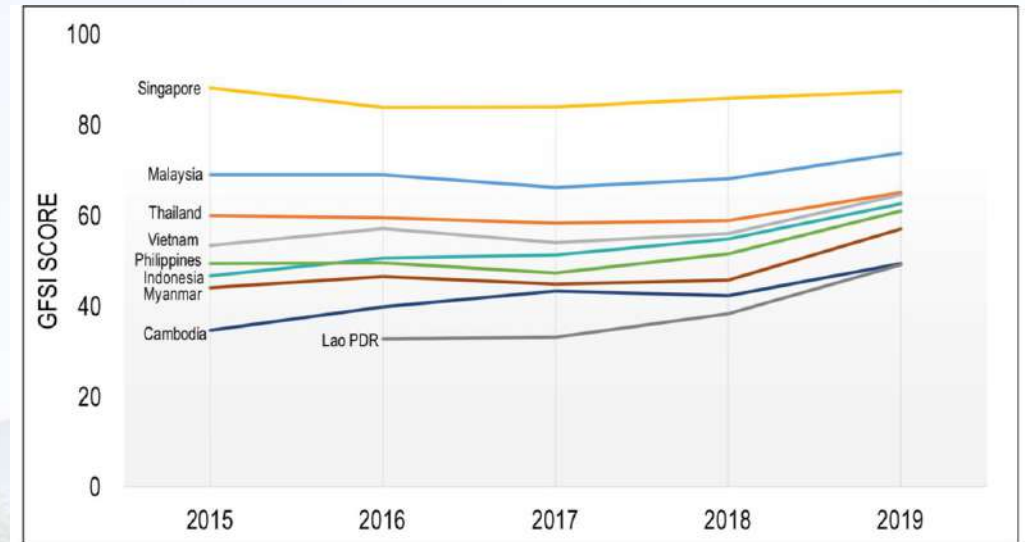
As of 2019, about 31% of combined population in SEA is employed in agriculture.

Except for Singapore, Malaysia, and Brunei, at least 23% of the total labor force of each Southeast Asian country has agriculture as its main source of livelihood, and as high as 62% in the case of Lao PDR.

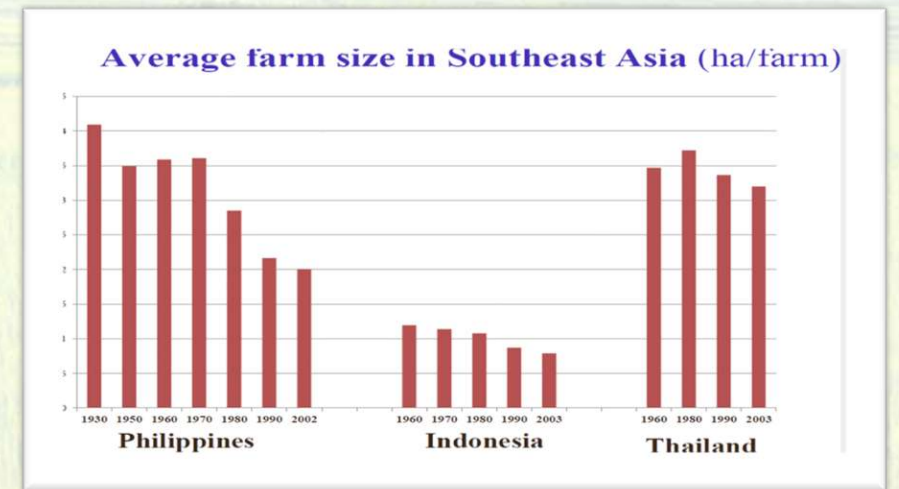
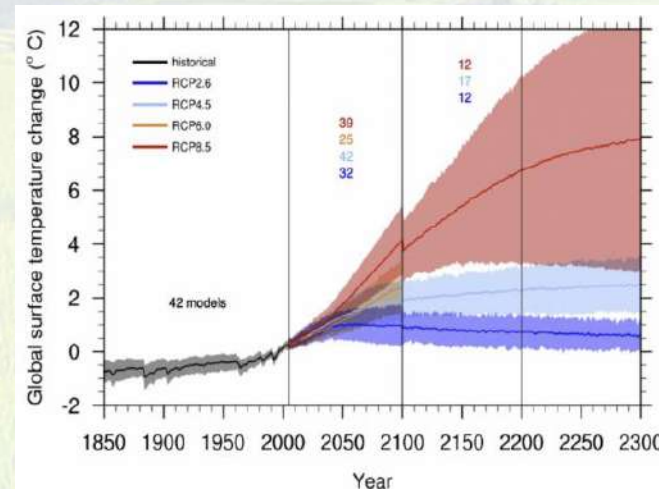
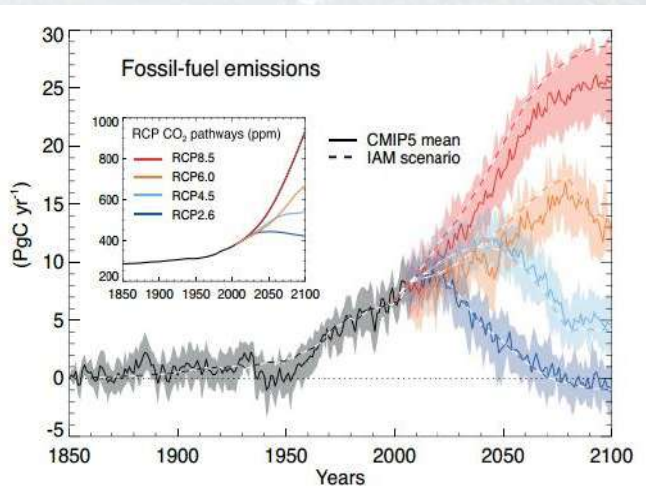
Agriculture and Poverty

However, for 2015–2019, 36 million people in SEA live below international poverty line (USD 1.9/day).

Average Gini coefficient of 77.23

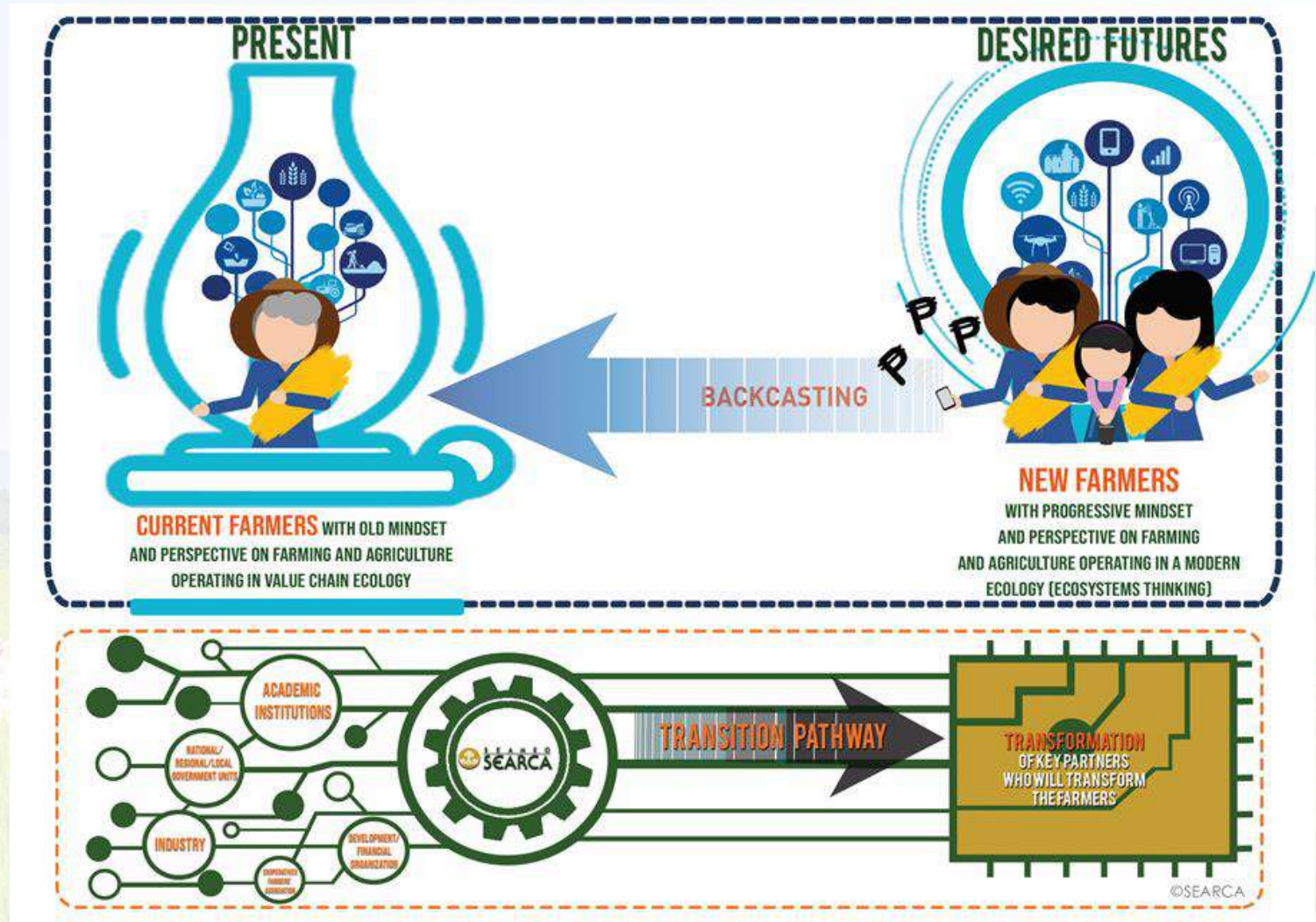


(EIU, 2020)

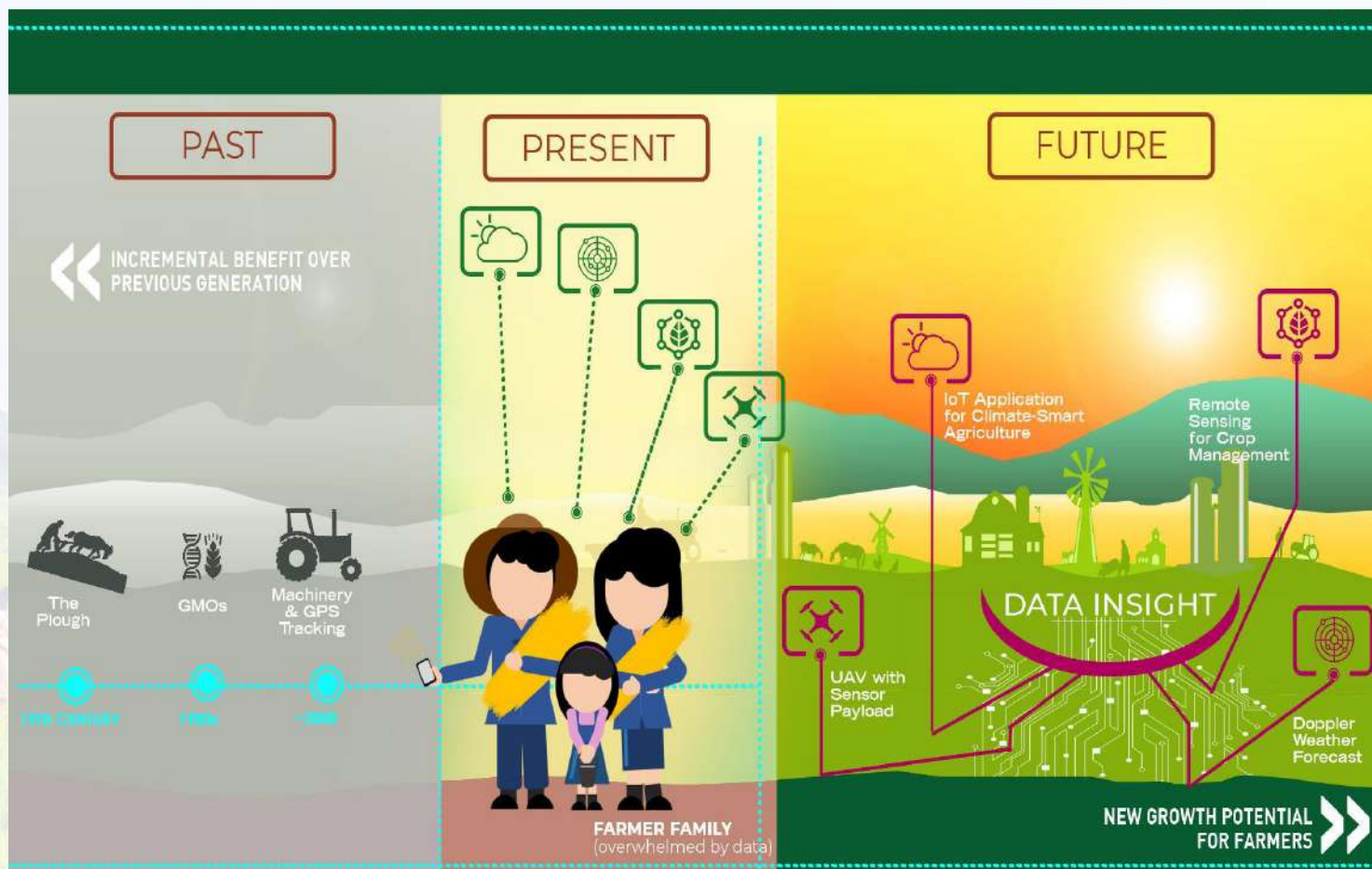


(Huang 2019)

Reinforcing the transformation of agricultural food systems in SEA by transforming SEARCA's key partners



Agricultural Innovation



- Farmer-centric and market centric extension systems
- Enhance access to farm inputs (i.e., seed systems)
- Fintech and business models
- Market-led agri-innovation
- Technology hubs for agricultural food systems

AgPractices&Domains Platform

to improve and build the capacity of agriculture researchers to use data from different sources to target integrated pest and disease management options through the use of platform, AgPractices&Domains

- 1) to develop the AgPractices&Domains platform
- 2) to train of researchers in how to access modelling and data analytics tools
- 3) to facilitate the development of technologies and options improving productivity



SEARCA
SEARCHA



ATTAIN
Asia Training and Technical Assistance Network



UNIVERSITY
OF SOUTHERN
QUEENSLAND



Co-funded by
the European Union



Why this workshop?

Workshop on Modeling Management of Climatic Stress in Rice-based Cropping Systems: The Application of the AgPractices&Domains Platforms

- Promote the use of AgPractices&Domains tool to advance agricultural research in delivering technologies and practice improving cropping systems productivity and adaption to climate variability;
- Train targeted to potential end users of the tool; and
- Generate feedback on the web-based application interface for further development.

What do we expect?

Day 1	Day 2
I. Opening Session (1 hour) <ul style="list-style-type: none">• Messages from Partners• Program Agenda	III. Tool Application (1 hour) <ul style="list-style-type: none">• Results interpretation using the tool• Data samples/ Answering research questions• Hands-on exercises using the tool
II. Technical Session (2 hours) <ul style="list-style-type: none">• Modeling concepts and principles• Purpose of the tool• Data inputs for the web-based platform• The web-based platform, its components and database	IV. Practical Exercises (3 hours) <ul style="list-style-type: none">• Group workshops (Breakout sessions)• Group presentations• Q&A, feedback and open discussion• Tool evaluation

Who are present?

- Project Proponents (TEIN, USQ, SEARCA, UPLB)
- Participants (academic and research institutions, development organizations, national agencies from SEA region)
- Student observers from partner institutions